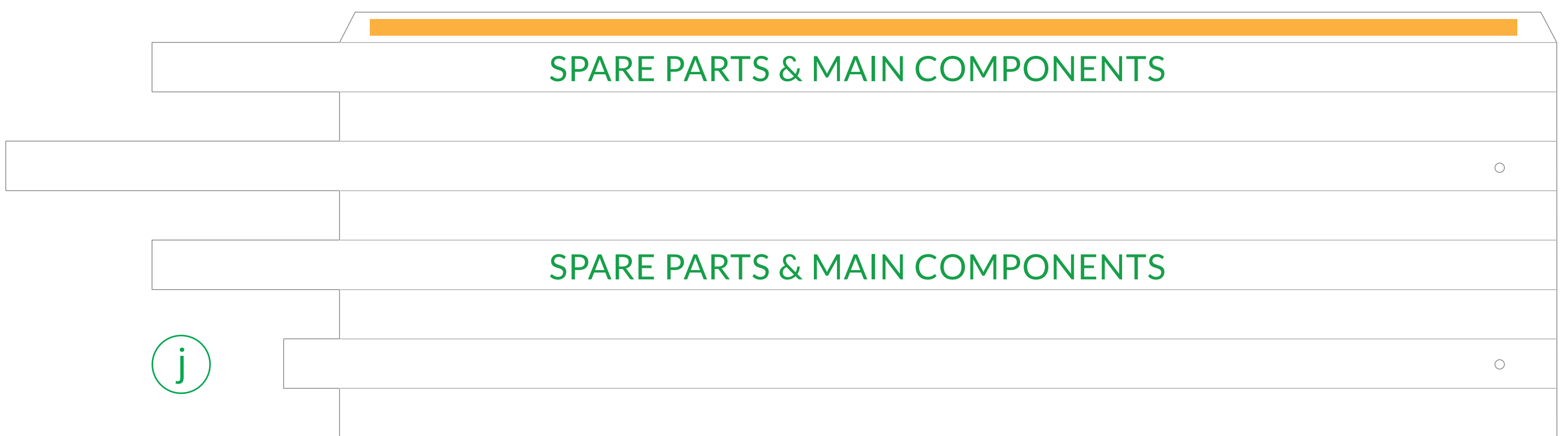
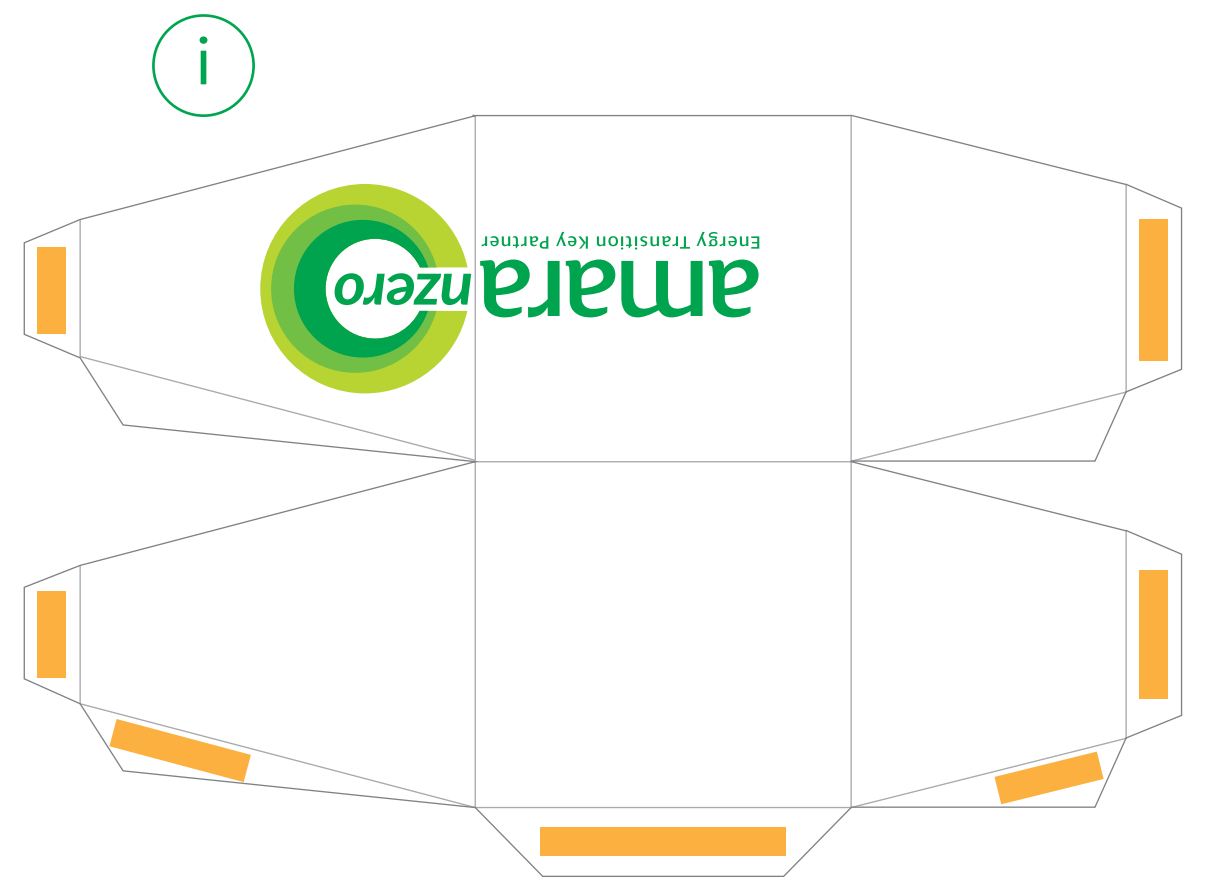
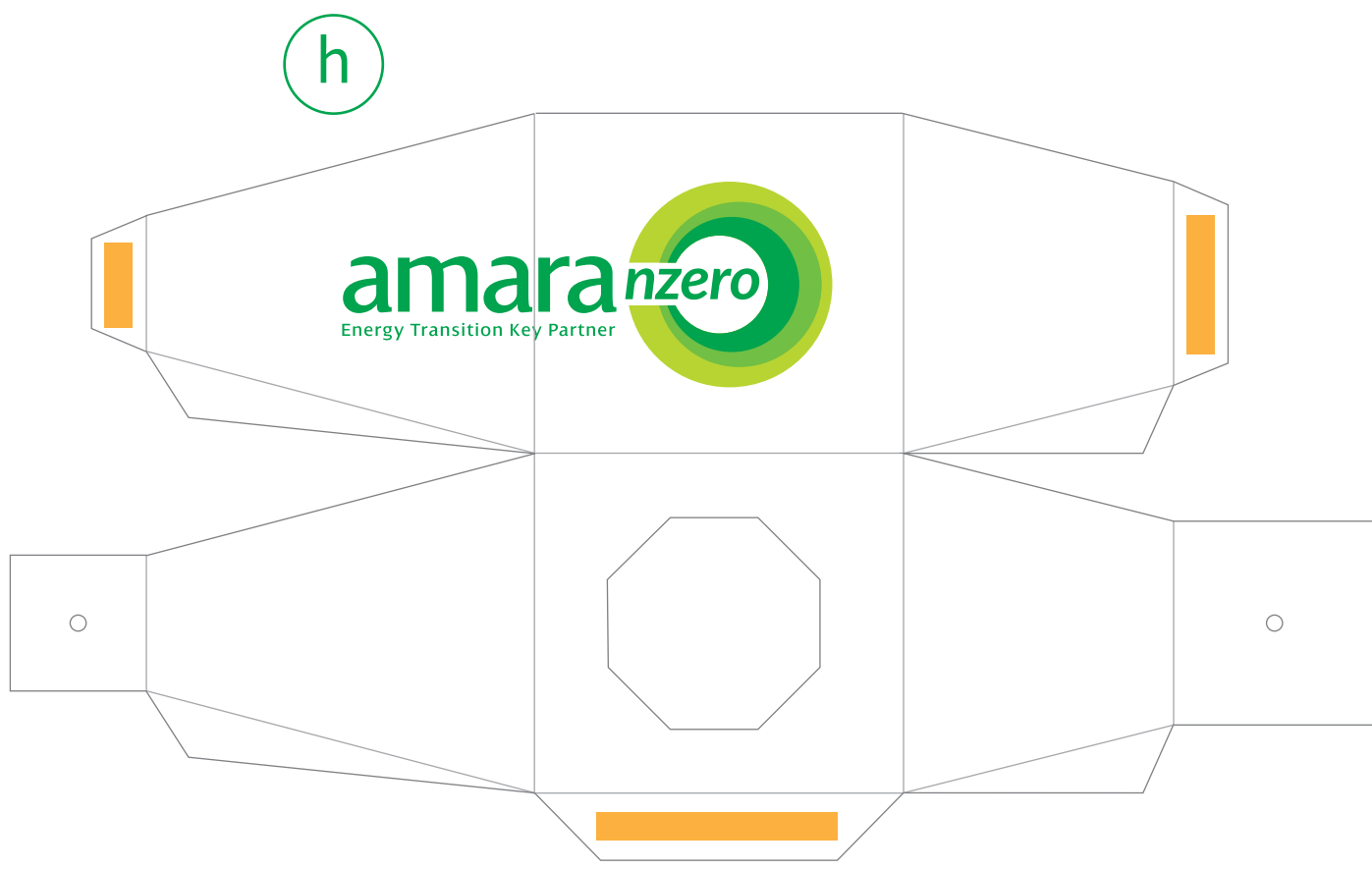
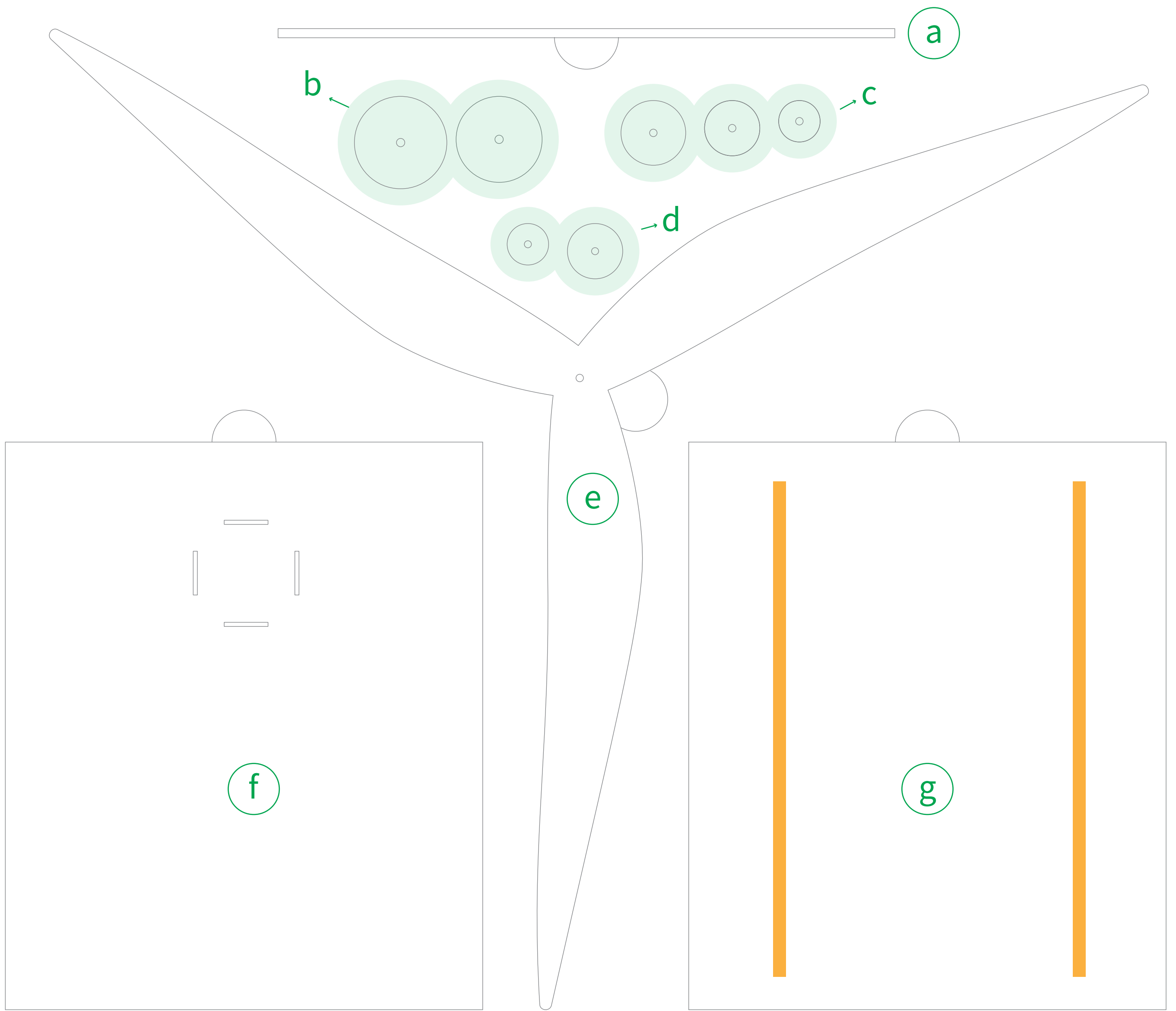



Assembly instructions

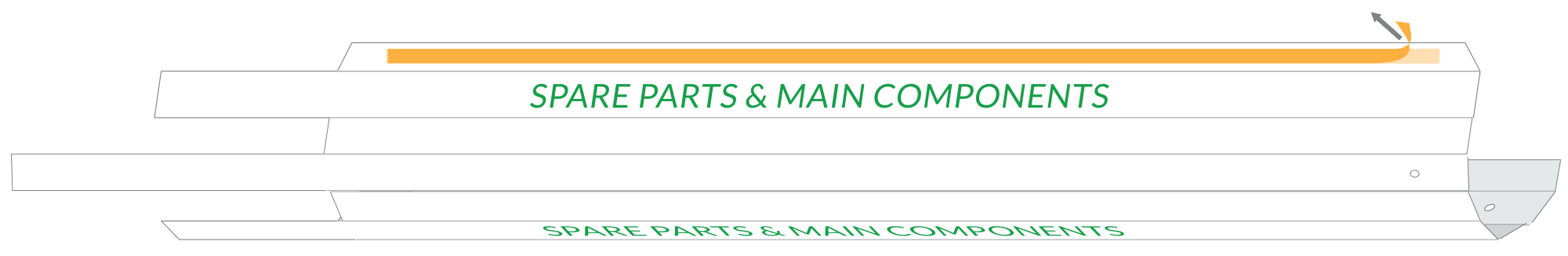


- a. Shaft
- b. Rear rings
- c. Middle rings
- d. Front rings
- e. Blades
- f. Upper base

- g. Lower base
- h. Lower nacelle
- i. Upper nacelle
- j. Tower
-  Adhesive

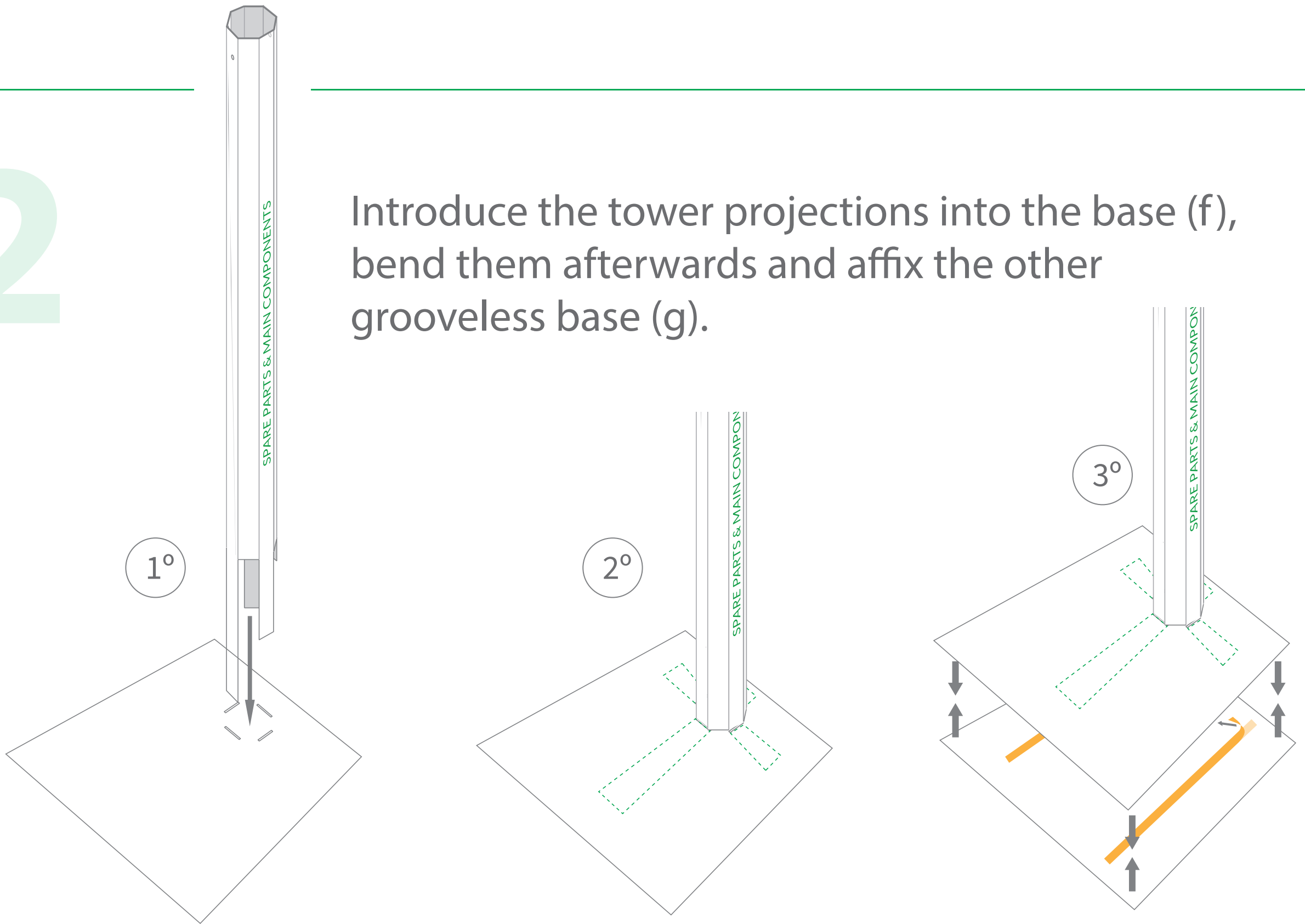
1

Extract the adhesive protection to create the tower (j).



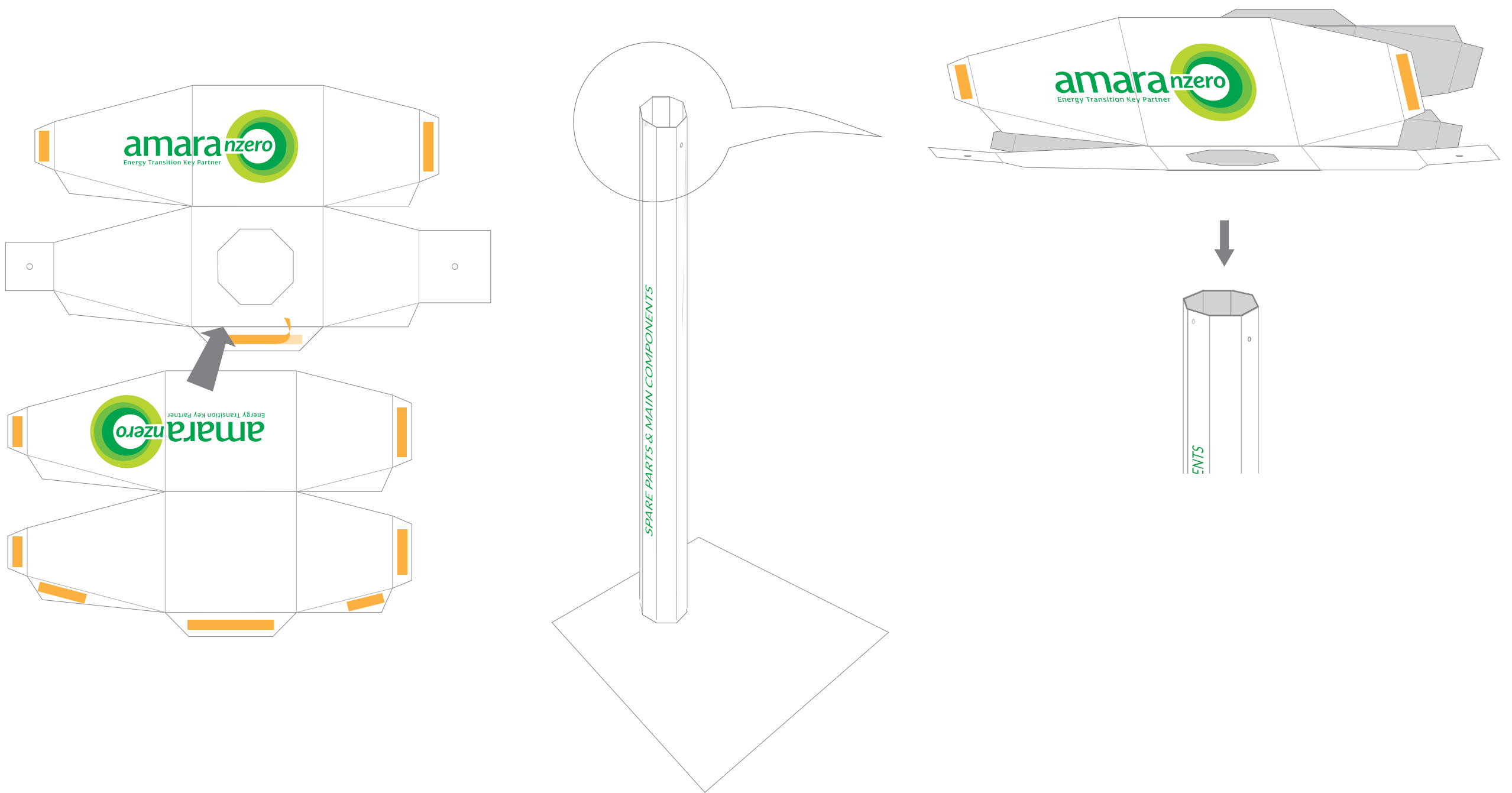
2

Introduce the tower projections into the base (f), bend them afterwards and affix the other grooveless base (g).



3

Put the two parts (h,i) of the nacelle together and introduce them into the tower.



4

Remove the rubber from the shaft (a) and store it in a safe place.



Introduce the two rear rings (d) to the end of the rubber.



5

Bend all the tabs inwards, remove the adhesive protectors, with the exception of the one that closes the nacelle.



6

Position the shaft placing it in the four gaps, starting from the rear part.



7

Introduce the two middle rings (b), the blades (e), the three front rings (c), and fasten with the rubber you stored earlier. Close the nacelle with the remaining adhesives.

